



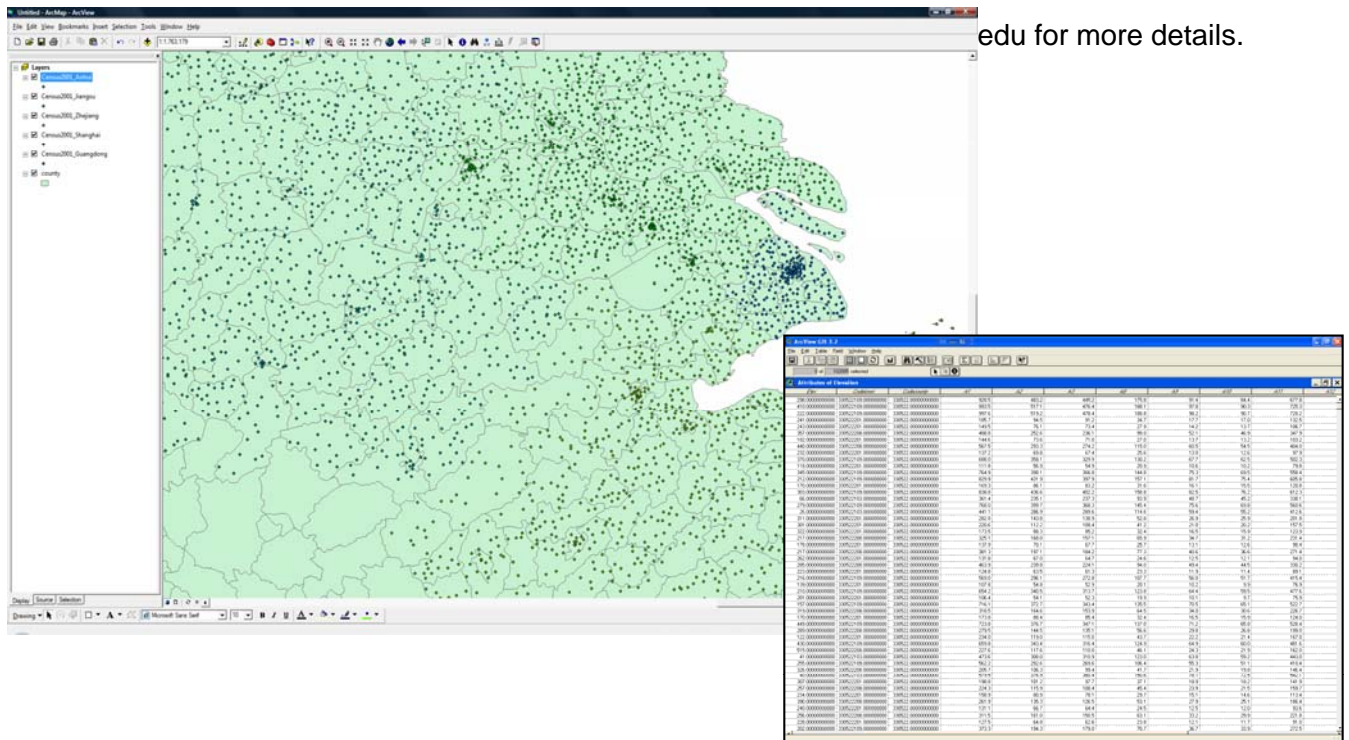
CHINA 2001 BASIC UNIT CENSUS DATA WITH GIS MAPS

中国2001年基本单位普查电子地图

In collaboration with the National Bureau of Statistics of China and the All China Marketing Research Co., Ltd, the University of Michigan China Data Center is pleased to release the series of “**China 2001 Basic Census Data with GIS Maps**”, which include “**China 2001 Basic Unit Census Data with Province Maps**”, “**China 2001 Basic Unit Census Data with Prefecture Maps**”, “**China 2001 Basic Unit Census Data with County Maps**”, and “**China 2001 Basic Unit Census Data with ZIP Maps**”.

The 2001 Basic Unit Census data provide extensive information on industries, major business, ownership, employment and revenue of all enterprises and units in China. This data product has integrated the 2001 Basic Unit Census data and the GIS maps at province, prefecture, county and ZIP code levels of all Mainland China. The GIS map is in Shape format, which is compatible with most GIS software for easy mapping and analysis.

“**The China 2001 Basic Unit Census Data with GIS Maps**” provides a significant spatial data product of China along with several other China GIS data products released by the China Data Center, including “China 2004 Economic Census Data with GIS Maps”, “China 2000 Province Population Census Data with GIS Maps”, “China 2000 County Population Census Data with GIS Maps”, “China 2000 Township Population Census Data with GIS Maps”, and “China Historical County Population Census Data with GIS Maps”, and “China Population GRID Data with Township Boundary Maps”.



edu for more details.